



ROSALIND FRANKLIN
UNIVERSITY
of MEDICINE AND SCIENCE

Pathologists' Assistant Program

Students,

Welcome to the Pathologists' Assistant Class of 2020! Following this letter is important information regarding text books for the summer quarter, as well as for the full academic year.

The Pathologists' Assistant Department has an exclusive textbook package with Elsevier, a textbook publisher, which allows you to save 40% off the books they publish. Of the textbooks included in the discount package, you will see most are included in the summer quarter book list while others are listed in the attached 2018/2019 academic year book list.

By purchasing the package, you will likely save more than if you shop at a discount website, however it is not required that you participate in the discount package. See the attached Elsevier flier for more details on the package.

To access the online book store, go to:

https://bookstore.mbsdirect.net/vbm/vb_home.php?FVCUSNO=37737&url=rosalindfranklin.htm

You will need to select your term, college and courses (see the below picture). For a complete list of your courses, refer to the attached curriculum schedule.

Getting Started

We've made it really easy to get your course materials. Let's get started.

Summer 2018
Starts between: 05/29/2018 - 06/12/2018

COLLEGE OF HEALTH PROFESSIONS

PATH ASST PGM CUS CUSTOM PACKAGE
Course start: 05/29/2018 - 06/07/2018

If you have any questions, please let me know.

Regards,

Kristen Sebring

Administrative Coordinator

Pathologists' Assistant Department

847-578-8584

Kristen.Sebring@RosalindFranklin.edu

Note: Students should refer to each course's respective syllabus as book lists are subject to change without notice to the orientation website.



ROSA LIND FRANKLIN
UNIVERSITY
of MEDICINE AND SCIENCE

Pathologists' Assistant Program

Summer Quarter 2018 Book List

Required Texts:

Lester, Susan. *Manual of Surgical Pathology*. 3rd ed. Philadelphia, PA: Elsevier Saunders, 2010. Print.

Westra, William, et al. *Surgical Pathology Dissection: An Illustrated Guide*. 2nd ed. New York, NY: Springer-Verlag, 2003. Print.

*This text is "print on demand only" and requires additional processing time.

Davis, D. *Laboratory Safety*. Hong Kong: American Society for Clinical Pathology Press, 2016. Print.

Carson, F.L., and Hladic, C. *Histotechnology: A Self-Instructional Text*. 4th ed. American Society for Clinical Pathology Press, 2014. Print.

Robbins, S. L., V. Kumar, A. K. Abbas, R. S. Cotran, and N. Fausto. *Robbins and Cotran: Pathologic Basis of Disease*. 9th ed. Philadelphia, PA: W.B. Saunders Company, 2015. Print.

Netter, F.H. *Atlas of Human Anatomy: Including Student Consult Interactive Ancillaries and Guides*. 7th ed. W.B. Saunders Company, 2018. Print.

*7th edition is due for release in March 2018.

Taxy, J.B., Husain, A.N., & Montag, A.G. *Biopsy Interpretation: The Frozen Section*. 2nd ed. Lippincott Williams and Watkins, 2014. Print.

Amin, Mahul B., et al. *AJCC Cancer Staging Manual*. 8th ed. New York, NY: Springer, 2017. Print.

Leonard, Peggy. *Building a Medical Vocabulary with Spanish Translations*. 10th ed. St. Louis, MO: Elsevier Saunders, 2017. Print.

Recommended Texts:

Kumar, V., A. K. Abbas, R. S. Cotran, and N. Fausto. *Robbins Basic Pathology*. 10th ed. Elsevier, 2017. Print.

Horn, C. & Naugler, C. *Gross Pathology Handbook: A Guide to Descriptive Terms*. 1st ed. Alberta: Brush Education, 2014. Print.

Note: Students should refer to each course's respective syllabus as book lists are subject to change without notice to the orientation website.



ROSALIND FRANKLIN
UNIVERSITY
of MEDICINE AND SCIENCE

Pathologists' Assistant Program

2018/2019 Programmatic Book List

This book list includes the required and recommended texts for the Pathologists' Assistant Program's intradepartmental courses. These courses include Clinical Correlations (I-IV), Clinical Correlations Laboratory (I-IV), Seminar (I-IV), Anatomic Pathology, Anatomic Pathology Laboratory, and Medical Terminology. The list below does not include required or recommended texts for Interprofessional Courses such as Structure and Function, Anatomy, Pathology, Neuroscience, etc. These IP courses are taught outside of the Pathologists' Assistant Department; Students will receive booklists for IP courses with each syllabus during their respective terms. Additionally, it is the Course Director's discretion to assign required and recommended text books, as such the books included in the list below are subject to change and students should always refer to the Course Director if they have questions.

Required Texts:

Lester, Susan. *Manual of Surgical Pathology*. 3rd ed. Philadelphia, PA: Elsevier Saunders, 2010. Print.

Westra, William, et al. *Surgical Pathology Dissection: An Illustrated Guide*. 2nd ed. New York, NY: Springer-Verlag, 2003. Print.

*This text is "print on demand only" and requires additional processing time.

Davis, D. *Laboratory Safety*. Hong Kong: American Society for Clinical Pathology Press, 2016. Print.

Carson, F.L., and Hladic, C. *Histotechnology: A Self-Instructional Text*. 4th ed. American Society for Clinical Pathology Press, 2014. Print.

Robbins, S. L., V. Kumar, A. K. Abbas, R. S. Cotran, and N. Fausto. *Robbins and Cotran: Pathologic Basis of Disease*. 9th ed. Philadelphia, PA: W.B. Saunders Company, 2015. Print.

Netter, F.H. *Atlas of Human Anatomy: Including Student Consult Interactive Ancillaries and Guides*. 7th ed. W.B. Saunders Company, 2018. Print.

*7th edition is due for release in March 2018.

Taxy, J.B., Husain, A.N., & Montag, A.G. *Biopsy Interpretation: The Frozen Section*. 2nd ed. Lippincott Williams and Watkins, 2014. Print.

Note: Students should refer to each course's respective syllabus as book lists are subject to change without notice to the orientation website.

Amin, Mahul B., et al. *AJCC Cancer Staging Manual*. 8th ed. New York, NY: Springer, 2017. Print.

Leonard, Peggy. *Building a Medical Vocabulary with Spanish Translations*. 10th ed. St. Louis, MO: Elsevier Saunders, 2017. Print.

Moore, K.L., T.V.N. Persaud, & M.G. Torchia. *Before We Are Born: Essentials of Embryology and Birth Defects*. 9th ed. Elsevier Saunders, 2016. Print.

Harmening, D. *Laboratory Management Principles and Processes*. 3rd ed. D.H. Publishing & Consulting, 2012. Print.

Stocker, J.T., Dehner, L.P. & Housain, A.L. *Stocker and Dehner's Pediatric Pathology*. 4th ed. Wolters Kluwer, 2016. Print.

Connolly, Andrew J., Finkbeiner, Walter E., Ursell, Philip C., Davis, Richard L. *Autopsy Pathology: A Manual and Atlas*. 3rd ed. Elsevier, 2016. Print.

Sheaff, M.T. & Hopster, D.J. *Post Mortem Technique Handbook*. 2nd ed. Springer-Verlag, 2004. Print.

Recommended Texts:

Kumar, V., A. K. Abbas, R. S. Cotran, and N. Fausto. *Robbins Basic Pathology*. 10th ed. Elsevier, 2017. Print.

Horn, C. & Naugler, C. *Gross Pathology Handbook: A Guide to Descriptive Terms*. 1st ed. Alberta: Brush Education, 2014. Print.

Dudek, Ronald. *High Yield Embryology*. 6th ed. Wolters Kluwer Health/Lippincott Williams & Wilkins, 2014. Print.

Young, Barbara and Geraldine Dowd. *Wheater's Functional Histology: A Text and Colour Atlas*. 6th ed. Churchill Livingstone/Elsevier, 2014. Print.

Gray, F., DeGirolami, U., & Duyckaerts, C. *Escourolle & Poirier's Manual of Basic Neuropathology*. 5th ed. Oxford University Press, 2014. Print.

Schneider, Arthur S., and Philip A. Szanto. *BRS Pathology*. 5th ed. Wolters Kluwer Health/Lippincott Williams & Wilkins, 2013. Print.

Gilbert-Barnes, E., & Debich-Spicer, D.E. *Handbook of Pediatric Autopsy Pathology*. 2nd ed. Humana Press, 2010. Print.

DiMaio, V.J.M. & Dana, S.E., *Handbook of Forensic Pathology*. 2nd ed. CRC Press, 2006. Print.



ROSLIND FRANKLIN
UNIVERSITY
of MEDICINE AND SCIENCE

Pathologists' Assistant Program

Curriculum Schedule

YEAR 1

SUMMER QUARTER		
MCBA 501	Clinical Anatomy	10
HAPA 560	Clinical Correlations I	3
HAPA 560a	Clinical Correlations I Lab	2
HAPA 550	Seminar I	2
HAPA 535	Medical Terminology	1

FALL QUARTER		
MPAT 600a	General and Systemic Pathology	6
PBBS 503a	Structure and Function	7
HAPA 561	Clinical Correlations II	3
HAPA 561a	Clinical Correlations II Lab	2
HAPA 551	Seminar II	2
HIPS 515a	Foundations for Interprofessional Practice	1

WINTER QUARTER		
MPAT 600b	General and Systemic Pathology	3
PBBS 503b	Structure and Function	4
HAPA 562	Clinical Correlations III	3
HAPA 562a	Clinical Correlations III Lab	2
HAPA 552	Seminar III	2
HIPS 515B	Foundations for Interprofessional Practice	1

SPRING QUARTER		
MPAT 600c	General and Systemic Pathology	3.5
PBBS 504	Neuroscience	5
HAPA 563	Clinical Correlations IV	3
HAPA 563a	Clinical Correlations IV Lab	2
HAPA 553	Seminar IV	2
HAPA 540	Autopsy Pathology	2
HAPA 540a	Autopsy Pathology Lab	2
HIPS 551	Leadership in the Healthcare Environment	3



ROSLIND FRANKLIN
UNIVERSITY
of MEDICINE AND SCIENCE

Pathologists' Assistant Program

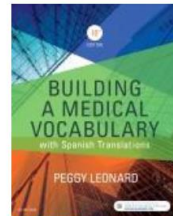
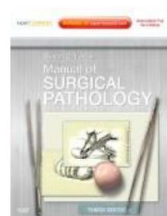
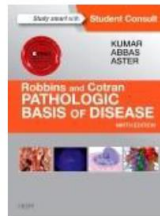
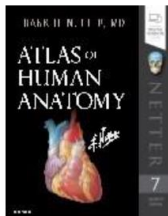
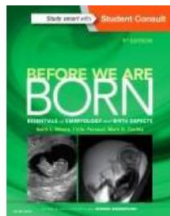
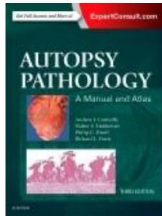
Custom Package Available for the Rosalind Franklin University Pathology Assistant Program



All books except *Building a Medical Vocabulary* include a full electronic copy of the title at no additional cost.

List Price (before discount): \$788.87

Bookstore Discount Price (40% off): \$473.50



This Custom Package including the books above is only available at the online Rosalind Franklin Bookstore at <http://bookstore.mbsdirect.net/rosalindfranklin.htm>

You will need to select your term, college and courses (see the below picture). For a complete list of your courses, refer to the attached curriculum schedule.

Getting Started

We've made it really easy to get your course materials. Let's get started.

Summer 2018
Starts between: 05/29/2018 - 06/12/2018

COLLEGE OF HEALTH
PROFESSIONS

PATH ASST PGM CUS CUSTOM
PACKAGE
Course start: 05/29/2018 - 08/07/2018



Note: Students should refer to each course's respective syllabus as book lists are subject to change without notice to the orientation website.