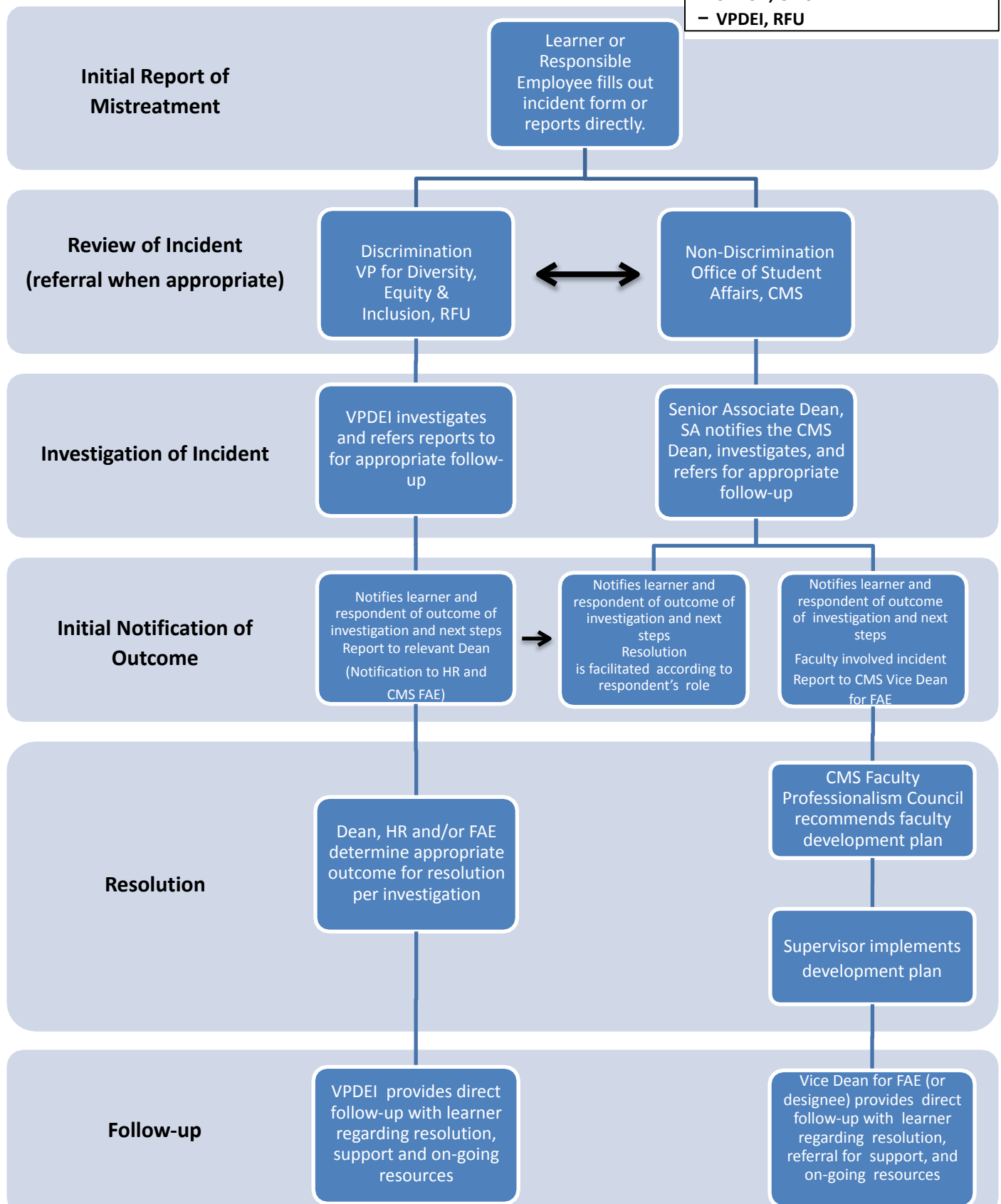


## Flow Chart for Reporting Learner Mistreatment

**Primary Contacts for all reports:**

- SADS, CMS
- VPDEI, RFU



Although every complaint will be resolved expeditiously and in accordance with University policy, individual situations may vary and complainant will be informed by a CMS Student Affairs representative.

Abbreviations: 1. VPDEI = Vice President for Diversity, Equity & Inclusion; 2. SADS = Senior Associate Dean for Student Affairs; 3. FAE = Faculty Affairs & Equity